



3.3.4.3 Northeastern Connecticut Transit District

The Northeastern Connecticut Transit District (NECTD) provides service to the northeast portion



of Windham County, Connecticut and borders Rhode Island and Massachusetts. The district operates a flexible route bus and a dial-a-ride service. The towns included in the service area are: Brooklyn, Canterbury, Killingly, Putnam, Thompson, Eastford, Plainfield, Pomfret, Woodstock, and Union (see Figure 33). This region together is approximately 392.8 square miles in size with a total population of 79,753.

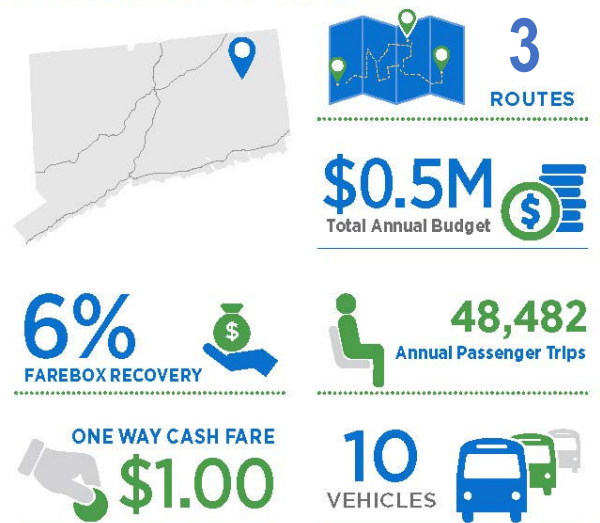
NECTD is owned, operated and managed by NECTD. NECTD operates three shuttle routes which provide service between the towns of Thompson and Brooklyn, the Northern Loop service for Putnam, and the Southern Loop service for Killingly/Brooklyn, and a North-South Shuttle route. The routes generally operate Monday through Friday with 60 minute headways. Service generally spans from 7:30 AM – 5:20 PM.

The cash fare for the transit district is \$1.00 for one-way travel. Discounts are available for multiple rides.

NECTD operates a fleet of ten vehicles for fixed route service, information on the number of vehicles used in maximum service was not available. For their deviated fixed routes the district operated 153,387 annual revenue miles of service and 9,641 annual revenue hours of service. FY2014 aggregate annual fare revenues totaled \$31,656 based on 48,482 annual passenger trips.²²

Annual Expenses in FY2014 for the district, including demand response, totaled \$550,878 for operations. NECTD received

Northeastern CT Transit



Source: Public Timetables and 2014 CTDOT Data

²² All data is from public schedules and timetables or provided by CTDOT unless otherwise noted.



Draft Existing Conditions: Connecticut Statewide Bus Study

operational funding of \$166,285 from the State of Connecticut, 12,381 from the local government and \$251,947 from the federal government. Fare revenue (covered 5.7 percent of operating expenses.)

DRAFT



Figure 33: Northeastern Connecticut Transit District Routes

