

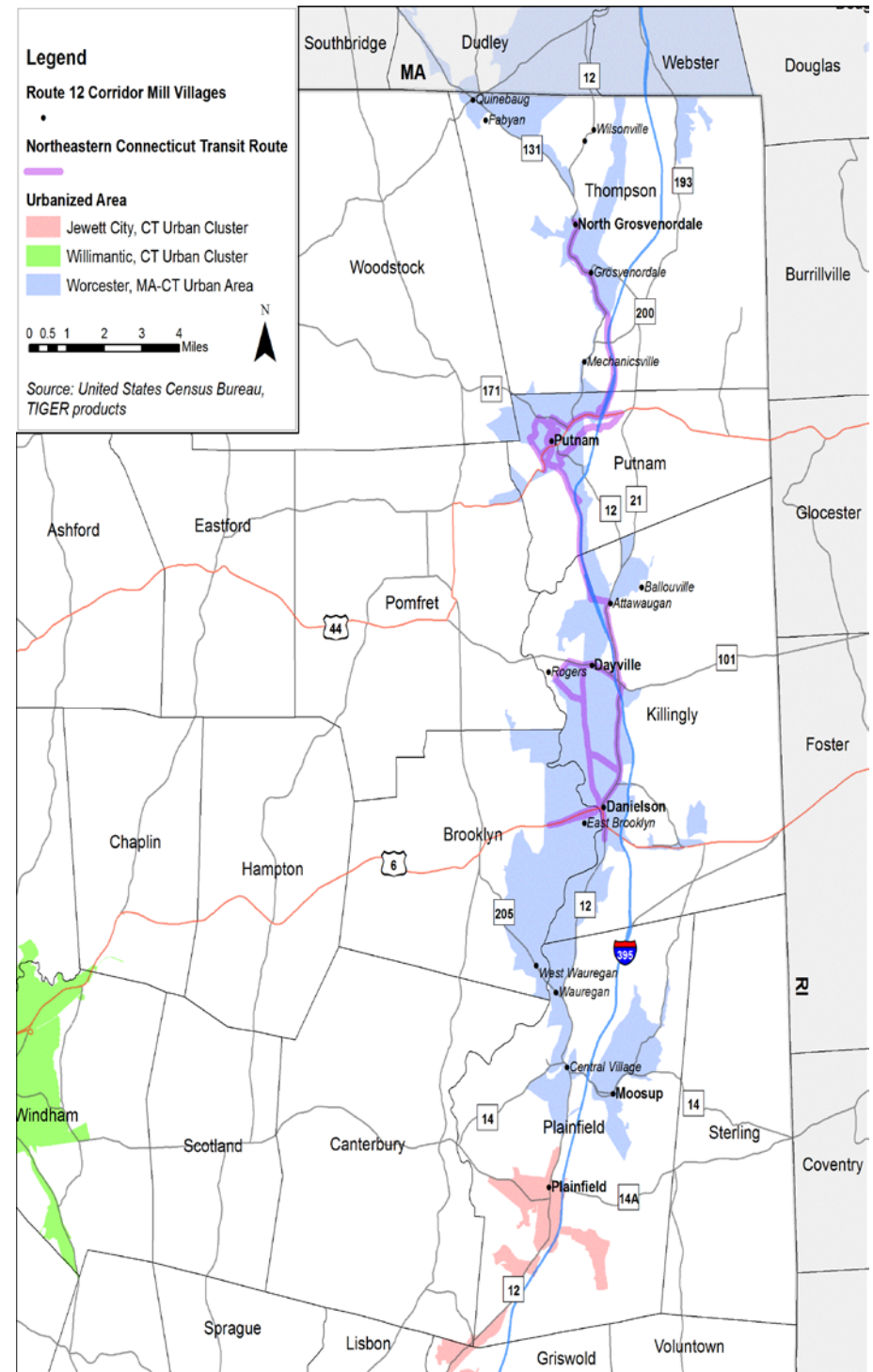
Northeastern Connecticut Transportation Information

Overview of the Region

- Number of Residents in the Region: 96,617
- Number of Households in the Region: 33,943
- Number of Households in the Region with No Vehicle: 2042
- Percentage of House in the Region without a Vehicle: 6%
- Percentage of Home Owners without a Vehicle: 2.5%
- Percentage of Renters without a Vehicle: 17.7%

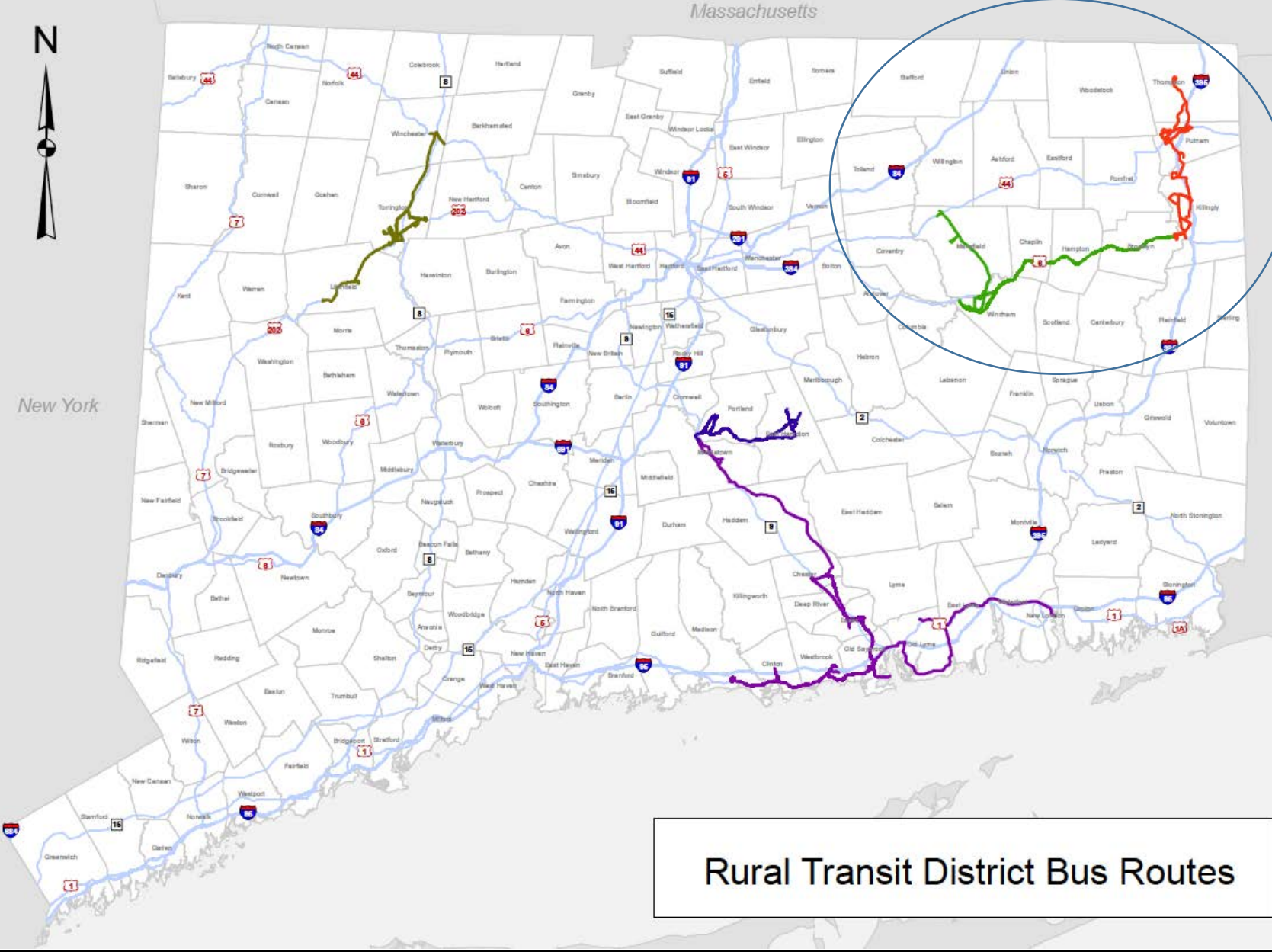
Highest Rates of Renters in the Region without a car:

- Putnam at: 24.8%
- Brooklyn at: 22.1%
- Killingly at: 16.5%
- Thompson at: 16.3%
- Plainfield at: 13.4%

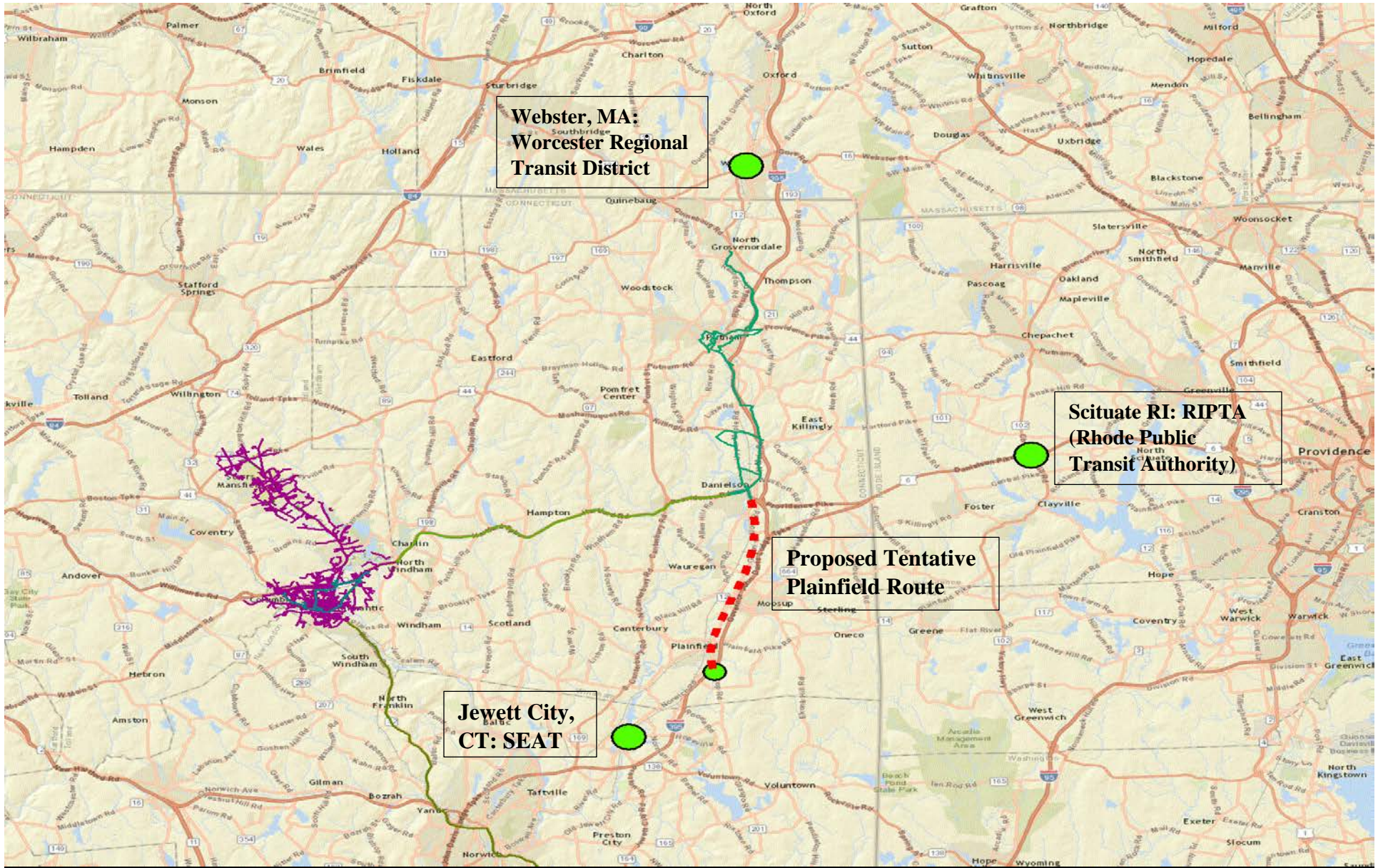




New York



Potential Connections with other Transit Services



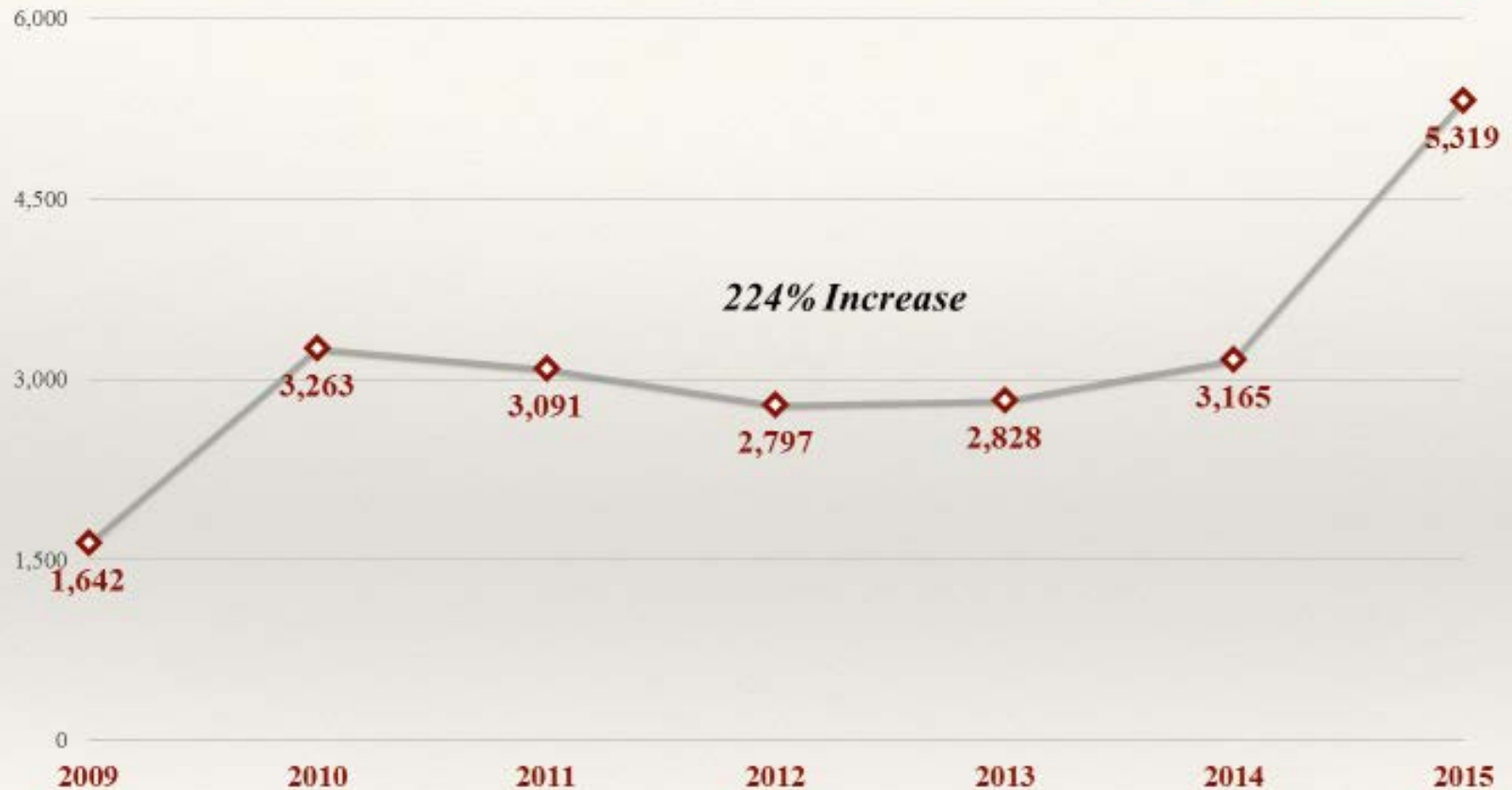
Ridership Numbers

Deviated Fixed Route Service



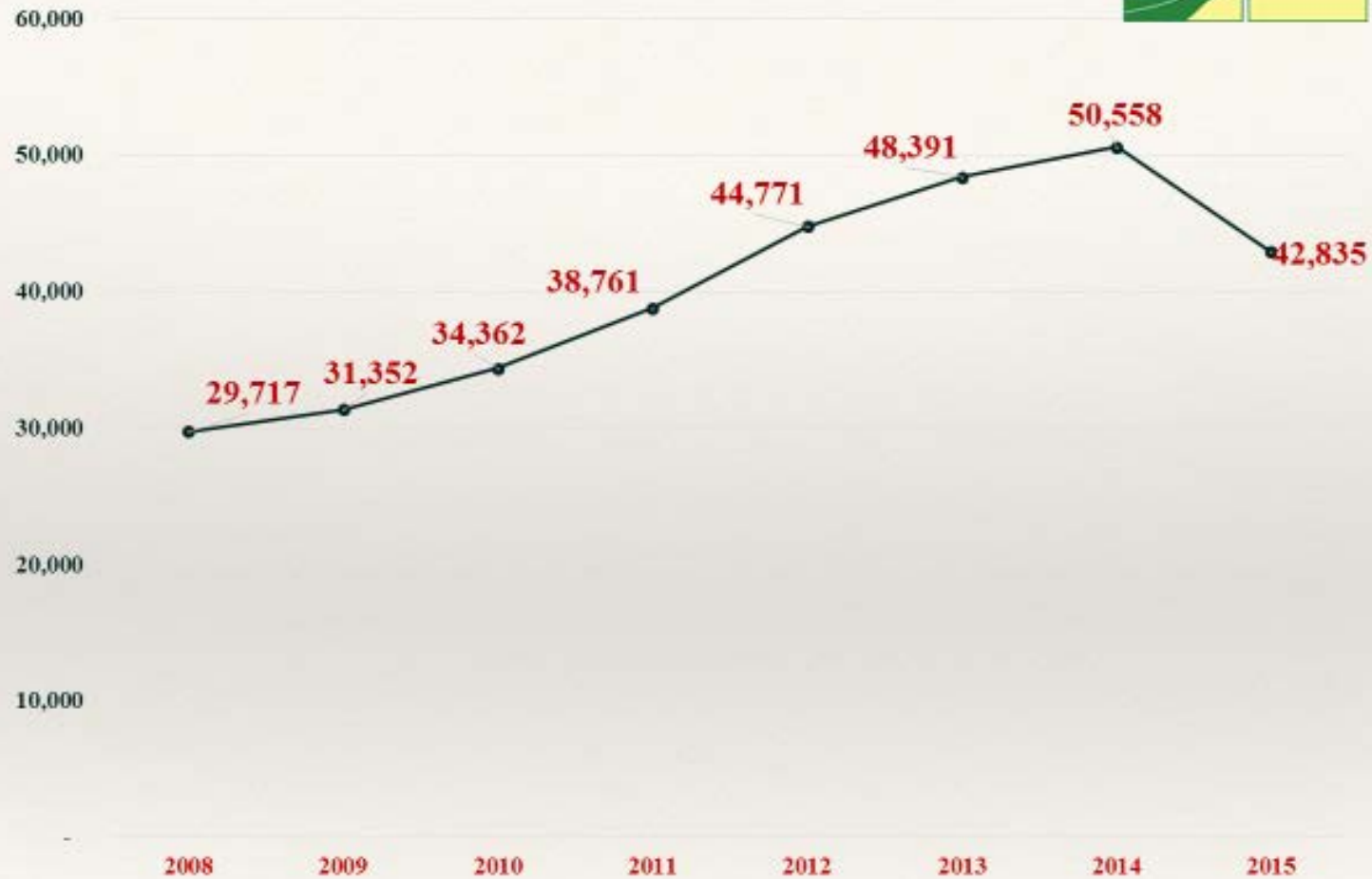
The Northeastern Connecticut Transit District offers Deviated Fixed Route service on all of its regular routes. A deviated-fixed route service is a hybrid of fixed-route and demand response services. With this type of service, a bus stops at fixed points and keeps to a timetable but can deviate its course between two stops to go to a specific location for a pre-scheduled request. After deviating from the route, buses return to the same point to continue their run. Deviated Fixed Route service requires 24-hour advance reservations. However, drivers may deviate when their schedules permit, as long as they remain close to their route schedule. Due to the limited availability, please do not anticipate this service will be available at all times and during all trips.

Elderly/Disabled Door-to-Door Service



With a special grant (Municipal Grant Program) from the State of Connecticut, NECTD provides door-to-door service for pre-qualified elderly and disabled persons. This service requires a simple application and 48-hour advanced reservation Monday-Friday and no later than Thursday before Monday service.

Annual Transit Ridership



There was 15.3% decrease (2014 to 2015) ridership due to many factors including; snow, lower fuel costs, economic improvement, a shortage in drivers